



$$e = \sum_{n=0}^{\infty} \frac{1}{n!} = \lim_{n \rightarrow \infty} \left(\frac{1}{0!} + \frac{1}{1!} + \frac{1}{2!} + \dots + \frac{1}{n!} \right)$$

Features:

- HYC-WO-UWB designed for covering continuously all the bands from 136 MHz up to 6 GHz
- High Efficiency in Omni directional coverage.

Performances:

Frequency	Gain	Ground Plane Size	VSWR
138-174 MHz	3dBi	400 x 400 mm (MG-400)	1.5:1 typ. (3:1 max)
380-450 MHz	4dBi	370 x 370 mm (MG-370)	1.5:1 typ. (2.5:1 max)
406-512 MHz	5dBi	165 x 165 mm (MG-165)	1.5:1 typ. (2.8:1 max)
698-746 MHz	6dBi	165 x 165 mm (MG-165)	1.5:1 typ. (2.5:1 max)
746-806 MHz	7dBi	165 x 165 mm (MG-165)	1.5:1 typ. (2.5:1 max)
806-960 MHz	7dBi	165 x 165 mm (MG-165)	1.7:1 typ. (2.5:1 max)
1200-2700 MHz	8dBi	Not Required	1.3:1 typ. (2.0:1 max)
3300-3800 MHz	10dBi	Not Required	1.3:1 typ. (1.7:1 max)
4100-6000 MHz	11dBi	Not Required	1.5:1 typ. (2.0:1 max)

- Polarization Vertical Linear
- Maximum power 50 watts CW
- VSWR: 1:1.5 @ Typical.

Mechanicals:

- Dimensions 540 x 40 mm & Base 72mm
- Connector N-type, female
- Weight 0.35 Kg
- Mounting for 50 mm pole mount
- IP-65 Water & Dust Resistant
- Radome Polycarbonate UV protected
- Back Plane Aluminum with chemical passivation
- Operating temperature range -55° to +65°
- Vibration conformity IEC60721-3-4
- Win load 200 km/h
- Flammability UL94
- Humidity ETS300 019-1-4, EN 302 085 (Annex A1.1)
- Salt Fog Compliant to IEC 68-2-11



Ordering Options

HYC-WO-UWB Antenna for 1200-6000 MHz

HYC-WO-UWB & MG-400 Antenna for 138-174 MHz

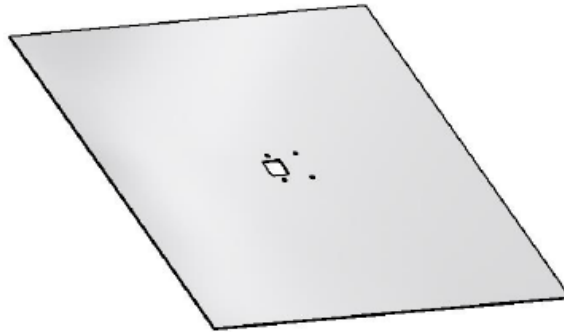
HYC-WO-UWB & MG-370 Antenna for 380-450 MHz

HYC-WO-UWB & MG-165 Antenna for 406-960 MHz

Hypercable

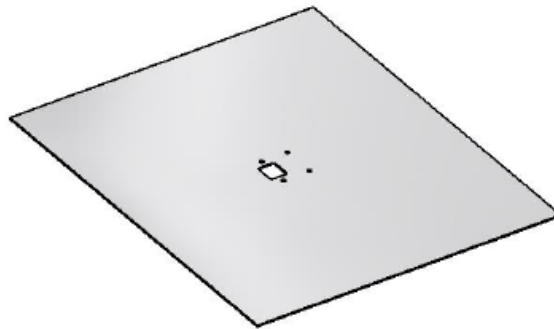
MG-400

400X400 mm
ground Plane for
MA-WO-UMB Antenna
(for 138-174 MHz)



MG-370

370X370 mm
ground Plane for
MA-WO-UMB Antenna
(for 380-450 MHz)



MG-165

165X165 mm
ground Plane for
MA-WO-UMB Antenna
(for 406-960 MHz)

